



Blue Mountains Forest Partners

Our Mission

“Blue Mountains Forest Partners is a diverse group of stakeholders who work together to create and implement a shared vision to improve the resilience and well-being of forests and communities in the Blue Mountains.”

Operations Committee Meeting Agenda

Meeting Overview:

- **Date of Meeting:** April 18, 2019
- **Time:** 4:00 – 7:00 pm
- **Location:** John Day Airport Conference Room
- **Facilitator:** Mark Webb
- **Minutes Scribe:** Susan Jane Brown

- **Call to Order: introductions, changes to the agenda, agenda approval (all):** agenda moved approval, seconded, passed unanimously.
- **Approval of March 2018 Full Group minutes (all)** Moved approval of minutes, seconded, passed
- **Ops’ update & Board elections (SJB):** confirmed election results approving of the slate of board candidates; board received a financial report from the executive director; Mark has stepped into a leadership role with the Rural Voices for Conservation Coalition, which will allow BMFP to increase its profile regionally and nationally; and previewed the full group agenda.
- **Forest Service project updates (Blue Mountain & Prairie City RDs):** Blue Mountain RD: Camp/Lick is on hold waiting for consultation; finalizing Ragged Ruby FEIS and hope to release it in June; Austin scoping package is nearing finalization, and hope to send that out in May. Prairie City RD: Cliff/Knox is finalizing alternatives and responding to comments, on schedule for a decision in early 2020; Upper Bear is the outyear project, and the USFS is doing field work this summer. Prairie City is now fully staffed, although they are down a NEPA planner. The USFS has flown the supervisor position; no word on when a decision may be made.
- **Forest Service prescribed fire update for 2018 & spring 2019 (Sarah Bush):** See attached presentation for more information. Sarah provided an update on the prescribed fire work that the Forest Service did last fall. Had a roughly normal burn season in September and October. USFS used local and non-local crews to complete the work, including partners such as BLM and ODF, and equipment such as drip torches, helicopters, and other support. USFS burned about 13,000 acres this fall! Forest Service has stepped up its communications work with the public, and has created an online tool that the public can use to see when the Forest Service will be burning so the public can tell what will be prescribe burned and when. USFS is



Blue Mountains Forest Partners

required to also inform ODF when preparing to burn, and to apprise the public of prescribed burns and possible smoke effects; the agency uses a number of tools to inform the public such as Facebook and the local radio. Forest Service receives information from the state weather forecasters that helps to inform how smoke may respond to prescribed fire, and uses tools like BlueSky Playground to forecast smoke effects. Forest Service would like BMFP to go out to see some of the past burns, and if possible, get the collaborative group out when the USFS is implementing prescribed burns.

Discussion followed. How are new smoke management rules affecting the USFS and are we taking the most advantage of the additional leeway? The communications piece will help us implement the rules, but we are still subject to the 1-hour limitation, which will limit how much additional burning we can do. If communities want to request an exemption from the 1-hour limitation, additional community involvement and communications will be required. Is the USFS considering using contractors to implement prescribed burns, and what is the cost differential? Yes, we have used contractors in the past, and there is a cost differential, but it depends on the nature and size of the burn. Contractors do allow the USFS to increase their capacity to burn more acres. What opportunities are there for citizens to be involved in the communications plan? We are just now implementing the new smoke management rules, and are figuring out how to involve interested parties in the planning and implementation of prescribed fire. What about using mechanical treatments rather than prescribed fire; what are the costs of prescribed fire? Most of the time we do a commercial harvest prior to prescribed burning: we are using all of the tools we have available.

What are the barriers to more prescribed fire? Forest Service hopes to continue to increase acres burned, but that will require us to use managed fire (i.e., managing natural starts for resource benefits) and to increase social license to allow for it. Need to increase managed fire in the shoulder seasons, which includes not putting out every fire, but also recognize that there are some resources that will require us to put the fire out. Do we need to do more mechanical treatment to allow for additional fire? Probably could, but we don't have enough capacity in the fire shop now to dramatically increase our fire use. How does the USFS reach out to adjacent landowners prior to burning? Several methods, often going door to door; always room for improvement. Would it be helpful to the USFS have the 1-hour exemption? Yes, it would help us get more acres treated.

- **Discussion of the Wildlife Habitat ZOA (Mark):** Mark shared the executive summary of the wildlife ZOAs for discussion. We undertook this work to work in concert with our existing ZOAs, which are vegetation focused; stakeholders and the agency were concerned about wildlife, and wanted to have a similar ZOA for wildlife as we do for veg. Wanted to make sure that we communicate the existing good work that the agency is undertaking, but also ensure that our NEPA documentation adequately supports our projects. This work doesn't seek to take us back to the past, but rather set up the forest to be more resilient in the future based on conditions that support wildlife species.

How should folks submit comments on the ZOA and how can we make the editorial process as smooth as possible? Please submit them directly to Trent (tseager@sustainablenorthwest.org); please provide comments by early May; we would like



Blue Mountains Forest Partners

to approve the ZOAs at the next BMFP meeting. Would like to hear especially from the SO and district biologists, particularly if there are other species that they are required to manage for but aren't captured by the ZOA; may be featured species that aren't captured. ZOA doesn't include species that are found outside of habitat types in which BMFP does not work. If those species aren't included, we should indicate why in the ZOA. Some of the habitat needs of some species (elk, snags) may be controversial; we should be aware of these trade-offs. Yes, project development will consider application of the ZOA on a site-by-site basis. Are the ZOAs policy, and does the USFS, ODFW, etc. have to abide by them? No, the ZOAs simply outline where there is agreement within BMFP, and because they represent the best available science, the Forest Service and other agencies will give them consideration because they help to reduce controversy and get projects implemented. The USFS can refer to the ZOA and the science in them when they prepare their NEPA analysis for a project. USFS is working on a companion piece that involves mapping and monitoring based on this work; will look like a decision tree to inform management.

- **Discussion of proposed prescribed fire ZOA and other work (Mark):** BMFP would like to explore several new ZOAs: 1) prescribed fire ZOA, similar to what HCRC did last fall; 2) roads management zones of agreement: this wouldn't prescribe closures, but rather a range of issues that the Forest Service should consider when thinking about how to manage roads at the project level; 3) implementation ZOAs, which would focus on how we implement projects, in what order, how best to sequence treatments on the ground, etc.; and 4) forest plan amendment that incorporates our ZOAs. Discussion followed. We will be fleshing out how we will proceed over the next several weeks.
- **Community organizing update (Elise):** Elise works for BMFP doing outreach to the community about the work that BMFP does and how it helps the forest and community; Elise has also organized natural resources camp last summer. Elise shared her community outreach plan that highlights some ideas that would be relevant to the community about the work that BMFP does, as well as some additional outreach materials. An additional outreach piece Elise is working on with state and USFS agency partners is natural resources education for high school students, and they will be taking a field trip to the Laycock area to see the area and discuss community protection; other field trips will follow. Goal is to encourage youth to think critically about natural resource issues. Elise would like to form a subcommittee on outreach; if you are interested, please contact Elise!
- **Reminder: Friday field trip with Laycock Creek Firewise Community members!**
- **Adjourn**



Blue Mountains Forest Partners

Blue Mountains Forest Partners Vision, Guiding Principles, and Grounds Rules for Collaboration

Our Vision

The Blue Mountains Forest Partners represents a broad constituency of stakeholders interested in healthy forest ecosystems, economic vitality and quality of life in Grant County, Oregon. We provide the US Forest Service with proposals for management of National Forest lands, and we support the utilization of forest resources and related opportunities to strengthen local economies.

Guiding Principles

- *To promote forest restoration in Grant County, integrating ecological, economic and community needs that have been developed and/or prioritized through collaboration.*
- *To improve our ability to work collaboratively and participate actively in these issues, finding common ground for our work. Our process will be open, inclusive and encourage participation of diverse stakeholders; our meetings will provide a 'safe' space for discussion and sharing of ideas.*
- *To overcome gridlock in forest planning and implementation. The success of our work is tied to long-term sustainability of forests and communities.*

Ground Rules for Collaboration and Meeting Participation

Members and nonmembers alike are expected to abide by these ground rules

- *Respect each other in and outside of meetings.*
- *No backroom deals.*
- *Personal attacks will not be tolerated.*
- *The personal integrity and values of participants will be respected.*
- *Stereotyping will be avoided.*
- *Commitments will not be made lightly and will be kept—agreements will be honored.*
- *Disagreements will be regarded as “problems to be solved” rather than as “battles to be won.”*
- *Participants are representative of a broad range of interests, each having concerns about the outcome of the issues at hand. All parties recognize the legitimacy of the interests and concerns of others, and expect that their interests will be represented as well.*
- *Participants commit to keeping their colleagues/constituents informed about the progress of these discussions*
- *Participants commit to stating interests, problems, and opportunities. Not positions.*
- *Participants will air problems, disagreements and critical information during meetings to avoid surprises.*
- *Participants commit to search for opportunities and alternatives. The creativity of the group can often find the best solution.*
- *Participants agree to verify rumors at the meeting before accepting them as fact.*
- *Respect the facilitator and meeting agenda.*

Blue Mountains Forest Partners

"Blue Mountains Forest Partners is a diverse group of stakeholders who work together to create and implement a shared vision to improve the resilience and well-being of forests and communities in the Blue Mountains."

Sign-In Sheet: Full Group, April 18, 2019

Name	Organization	Email Address
Mark Webb	BWFP	-
Bill Skinner	SELF	billskinner@centurytel.net
Fon Sevey	Citizen	rdsevey@gmail.com
Sarah Bush	USFS	
Erin Miller	USFS	
Rond Simpson	USFS	
Ryan Falk	USFS	
Dave Humbal	Grayback Forestry	
Colleen Malaney	USFS	
Laurie Montgomery	USFS	
Bob Foxworth	USFS	bob.foxworth@usda.gov
Ed Guzman	USFS Prank City	edwardor.guzman@usda.gov
Teri Corning-Sevey	PCPD USFS	teresa.corningsevey@usda.gov
Patty Nelson	Gov. Mr. BJ OYC	laurel.kent@live.com

Name	Organization	Email Address
Curtis Perry	Bober Web Read	
Frances H. Preter	Citizen - Prairie City	frprester1@gmail.com
Jane Tranter	Citizen J.D.	
Xan Hardy	WELC	on file
Ed Clark	USFS	on file
Sgt Officer	USFS	Charles Officer @ FS, Fed. us mt to m511
Caleb Sturgill	ODE	
James Johnston	OSU/BMFP	james.johnston@oregonstate.edu
Scott McQuinn		Autzen 946@gmail.com
Ryan Tortorello	ODEU	ryan.tortorello@state.or.us
Ryan Platte	ODFA	ryan.c.platte@stat.or.us
Maek Leroy		maekleroy@gmail.com
Susan Jane Brown	WEC	brown@westernlaw.org
Elise Delgado	BMFP	elise.delgado@outlook.com
Nathan Poage	USFS	

Please add mt to m511



PRESCRIBED FIRE- FALL 2018

MALHEUR NATIONAL FOREST



TIMING

START:	SEPTEMBER 17, 2018
2014, 2015:	SUPPRESSION
2016:	SEPTEMBER 23
2017:	SEPTEMBER 30
END:	OCTOBER 24, 2018

RESOURCES USED

LOCAL AGENCY

RXB2/ RXB2 (t)

Engines, Individuals, all districts including
airbase, militia

LOCAL NON-AGENCY

ODF

Contractors (engine and 5-person module)

NON-LOCAL

Agency engine- AK

Contractors (Central OR)

IGNITION DEVICES

- Hand
 - Drip torches
 - Very pistols





IGNITION DEVICES

- Aerial
 - PSD

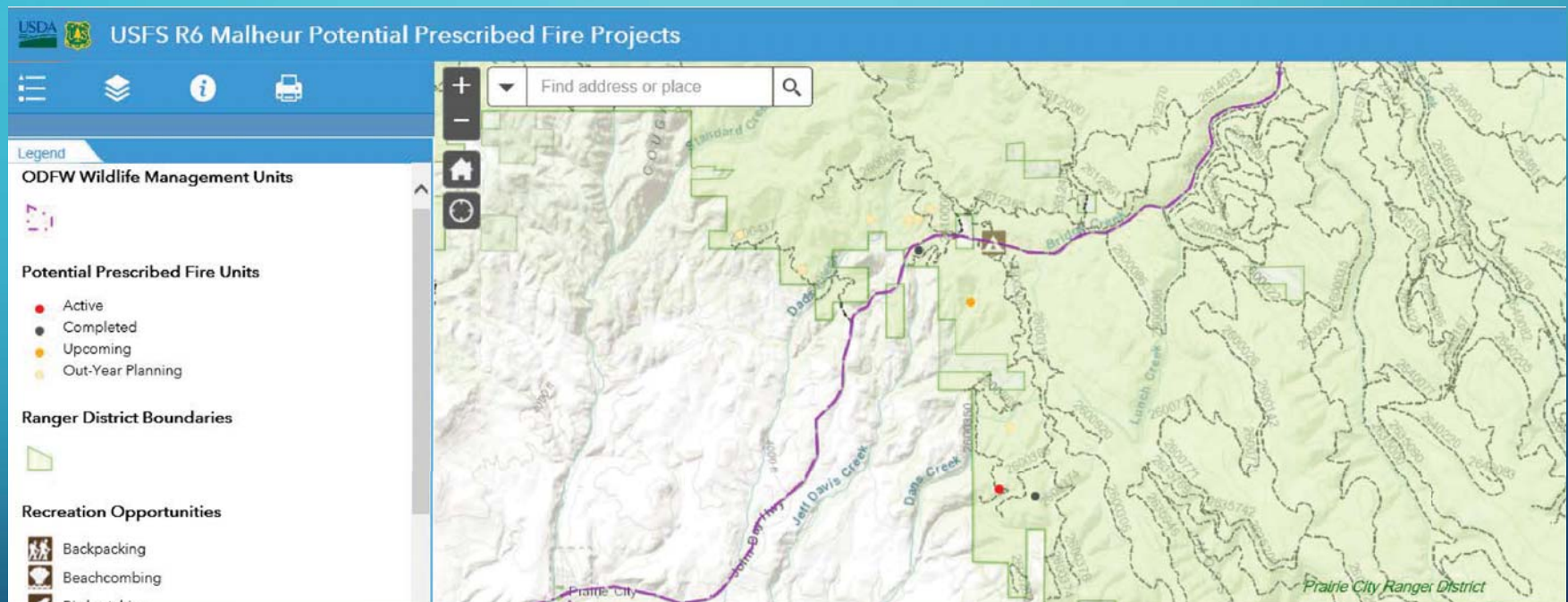




HOW MANY ACES DID WE BURN?

- 3061 ac (FY 2018)
- 10766 ac (FY 2019)
- BM 3780 ac
- EC 6000 ac
- PC 1041 ac
- Contract and Agency

Communication



<https://usfs.maps.arcgis.com/apps/webappviewer/index.html?id=755d242bd7024b5ebfb1ebc5b0dcd2c9>

Smoke Communication

ODE

- Registration 7 days prior to ignition

- Plan 1 day prior to ignition

- Accomplish results post ignition

Unit location, size, fuel loading, has it been harvested, burn type

Public/Internal

- Prior to ignition

- Press release, door to door, local business, radio, FB, neighbors- dispatch

SMOKE MANAGEMENT FORECAST & INSTRUCTIONS

SHORT TERM DISCUSSION & EXTENDED DISCUSSION

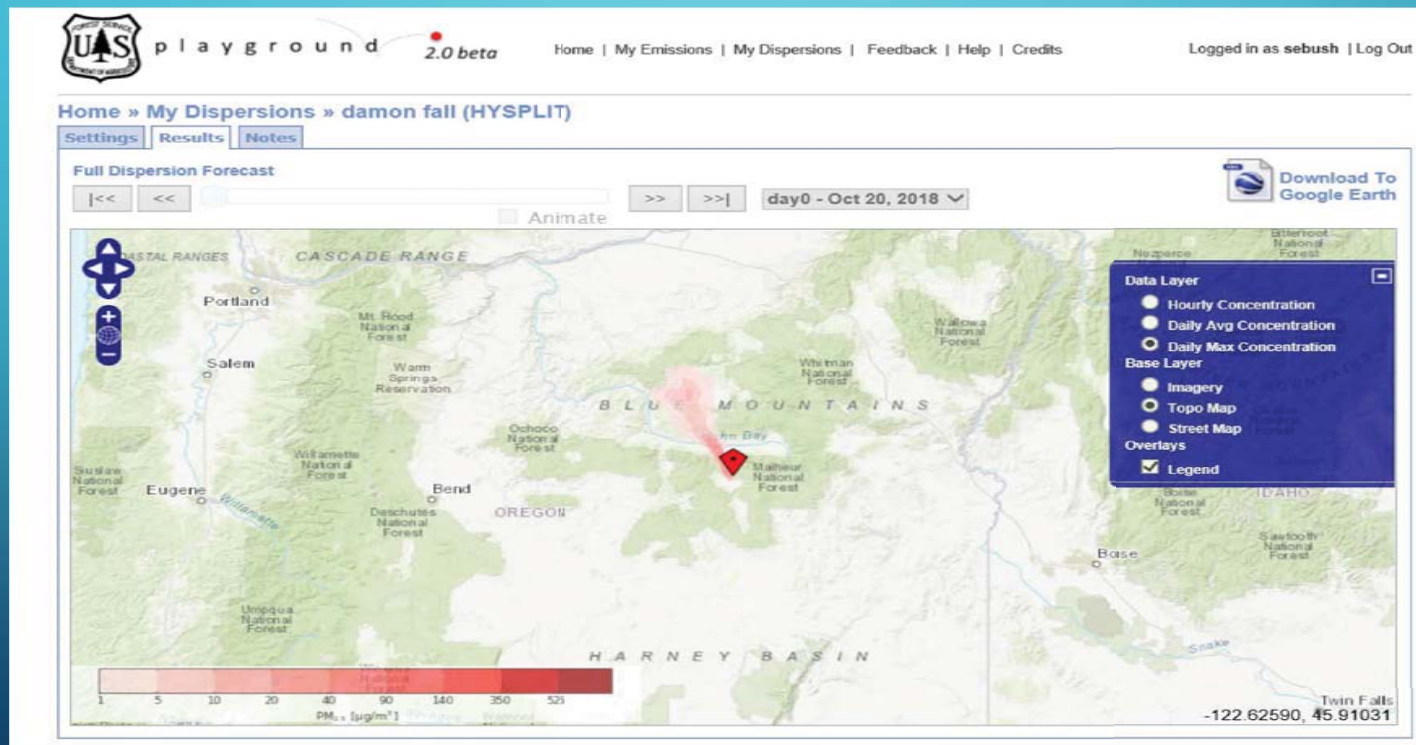
DISPERSION (WIND SPEED & DIRECTION), TRANSPORT WINDS

RECEIVE BURNING INSTRUCTIONS

TIMING OF IGNITIONS, SMOLDERING UNITS, COMPLETION OF IGNITION IN RELATION TO SSRAS

GIVES FORECASTER PHONE # FOR CALLS- WE DO THIS OFTEN, NOT ALWAYS
MONITOR, DOCUMENT, PROVIDE FEEDBACK

SMOKE MODELLING



DAMON 4

Small diameter tree mortality





Historic Cabin Pre burn

Historic Cabin Post burn





Starr



Starr



Damon





The background is a blue gradient. In the corners, there are white line-art illustrations of circuit boards or neural networks, with lines and small circles representing nodes.

Questions?